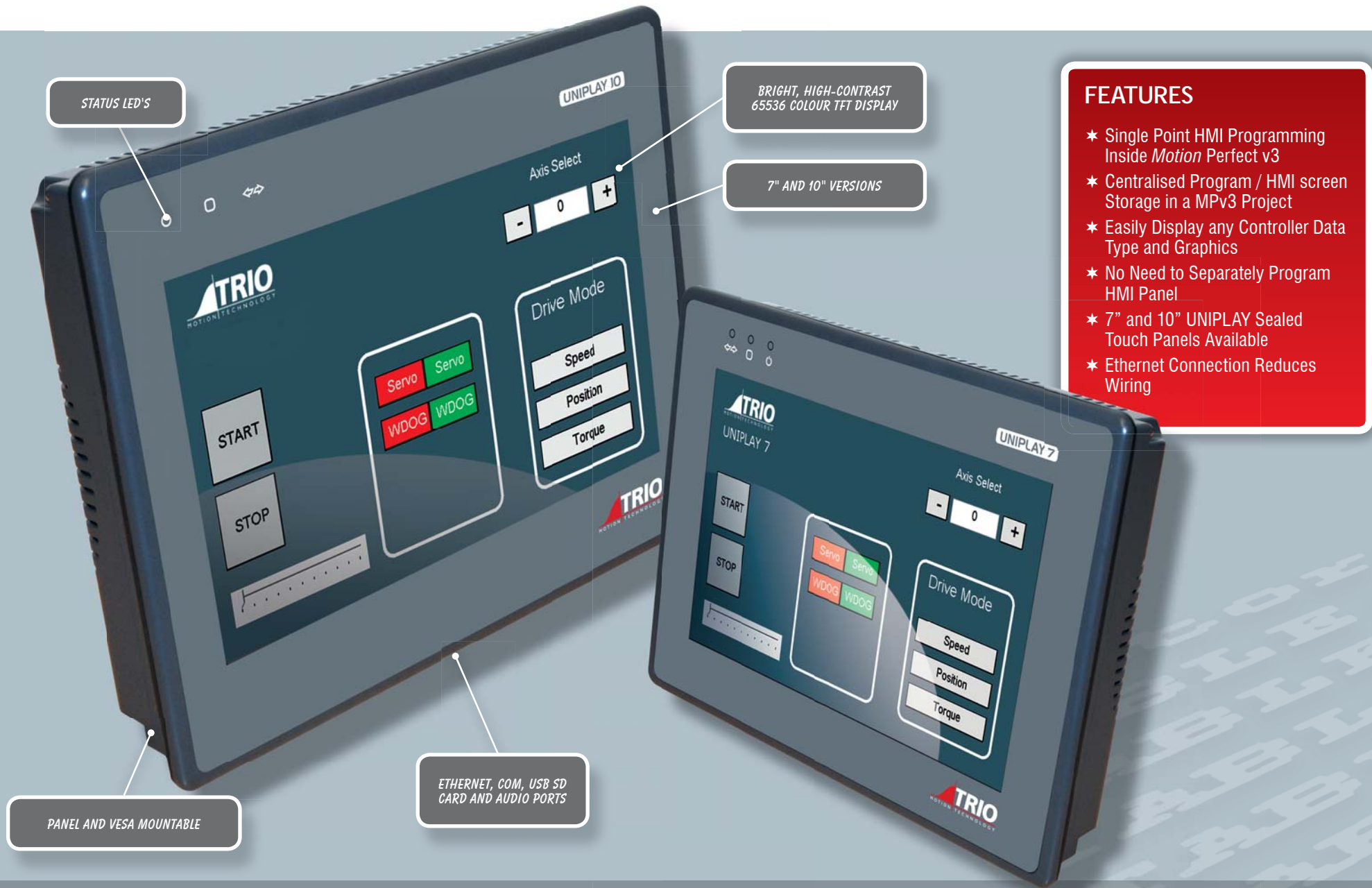


UNIPLAY HMI



- ### FEATURES
- ★ Single Point HMI Programming Inside *Motion Perfect v3*
 - ★ Centralised Program / HMI screen Storage in a MPv3 Project
 - ★ Easily Display any Controller Data Type and Graphics
 - ★ No Need to Separately Program HMI Panel
 - ★ 7" and 10" UNIPLAY Sealed Touch Panels Available
 - ★ Ethernet Connection Reduces Wiring

STATUS LED'S

BRIGHT, HIGH-CONTRAST 65536 COLOUR TFT DISPLAY

7" AND 10" VERSIONS

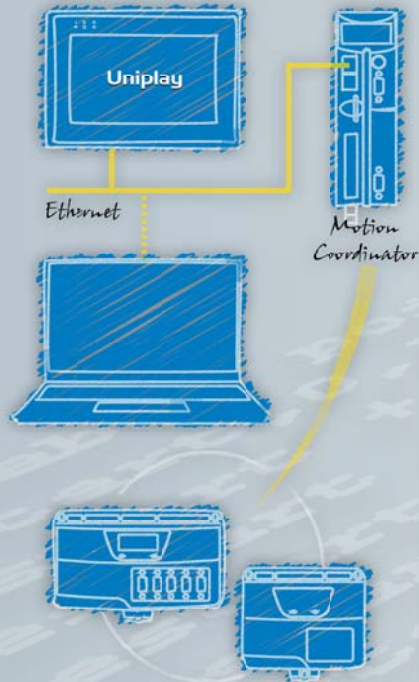
PANEL AND VESA MOUNTABLE

ETHERNET, COM, USB SD CARD AND AUDIO PORTS

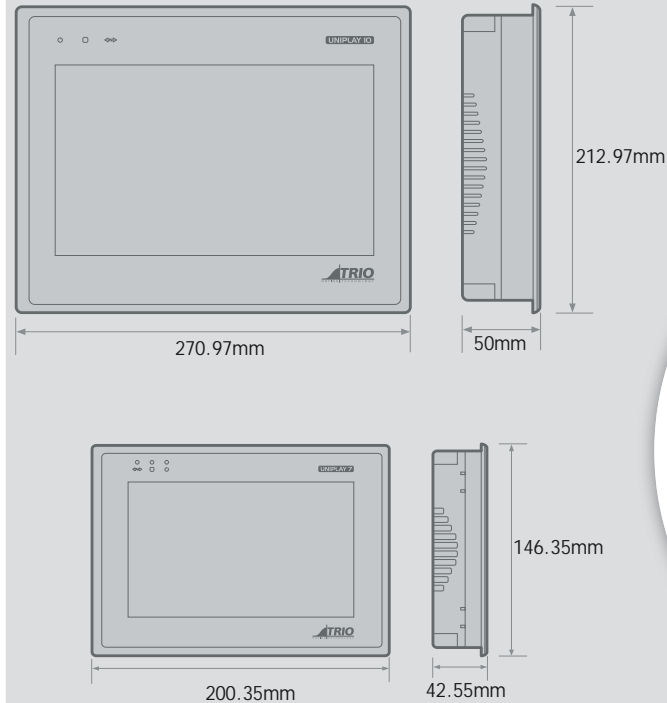
Trio's unique UNIPLAY HMI system is a revolutionary way to make operator interfaces better, easier and more secure! The UNIPLAY series boasts a 7" and 10" colour display.

The UNIPLAY range has built-in power isolation technology making it more reliable in noisy environments.

No additional software is required; UNIPLAY HMI's work with the Trio MC4 Motion Coordinator range. Motion Perfect v3 is used to create operator HMI screens which are transferred to the UNIPLAY HMI by the Motion Coordinator at runtime.



OVERALL DIMENSIONS P843 AND P844



UNIPLAY PRODUCT OPTIONS

P843	P844
UNIPLAY 7"	UNIPLAY 10"

