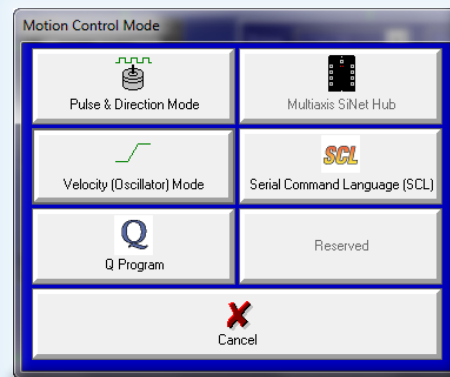
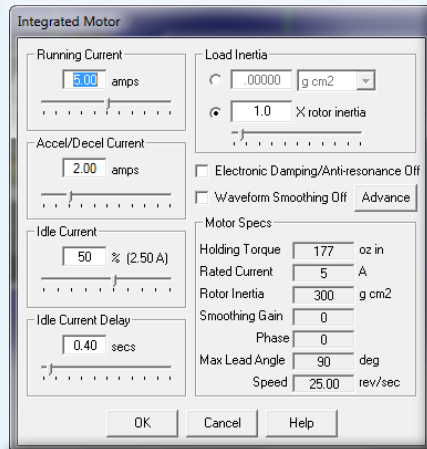


Step 3

- a) Apply power to the drive. The drive model and firmware revision should be automatically displayed in the *ST Configurator™* software.
- b) Follow the configuration instructions in the *ST Configurator™* help screens. The *ST Configurator™* software can be used to set up your drive to operate in several different modes including: pulse & direction, velocity (oscillator), streaming commands (SCL), and Q programming mode.
- c) *ST Configurator™* includes a self test option (under the Drive menu) to verify that the STM and power supply are correctly wired and configured.



If you have any questions or comments, please call Applied Motion Products Customer Support: (800) 525-1609, or visit us online at applied-motion.com.



18645 Madrone Pkwy
Morgan Hill, CA 95037
Tel: 800-525-1609
applied-motion.com

**STM23/24 Ethernet
Quick Setup Guide**

920-0058C