

STM23/24 Quick Setup Guide



Requirements

To begin, make sure you have the following equipment:

- A small flat blade screwdriver for tightening the connectors (included).
- A personal computer running Microsoft Windows 98, 2000, ME, NT, XP, Vista or 7/8/10/11
- *ST Configurator*™ software (available at www.applied-motion.com/products/software).
- For RS-232 models: an Applied Motion programming cable (included)
- For RS-485 models: an RS-422 or RS-485 port or adapter for your PC (see reverse for recommended RS-485 adapter)
- For more detailed information, please download and read the *STM23 Hardware Manual* (or *STM24 Hardware Manual*), available at www.applied-motion.com/support/manuals.

Step 1

Wire the drive to the DC power source.
(do not apply power until all connections to the drive have been made.)

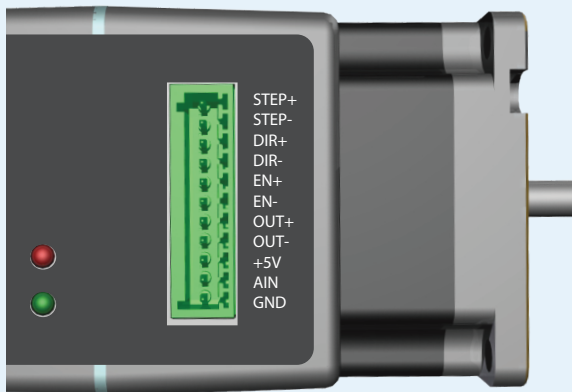
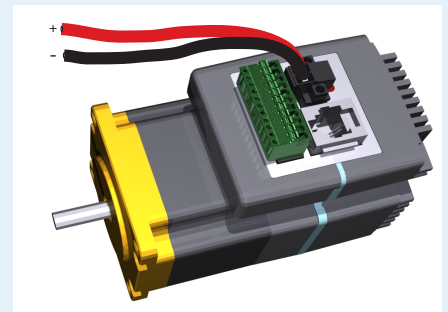
Note, the STM23 and STM24 accept DC voltages from 12-70V.

If using an external fuse, we recommend the following:

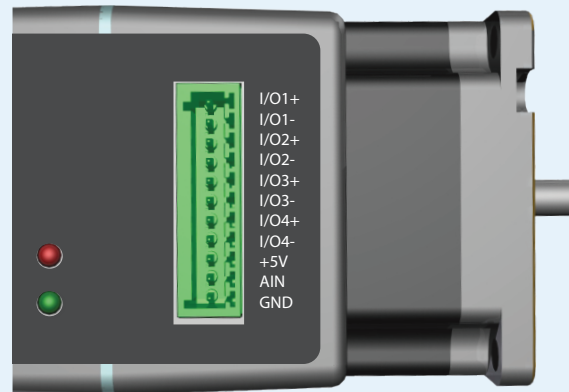
STM23: 3AG, 4 amp (Littlefuse 313004P)

STM24: 3AG, 5 amp (Littlefuse 313005P)

See the product hardware manual for more information about power supply and fuse selection.



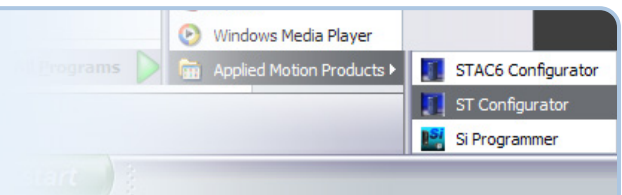
STM w/ Standard I/O



STM w/ Flex I/O

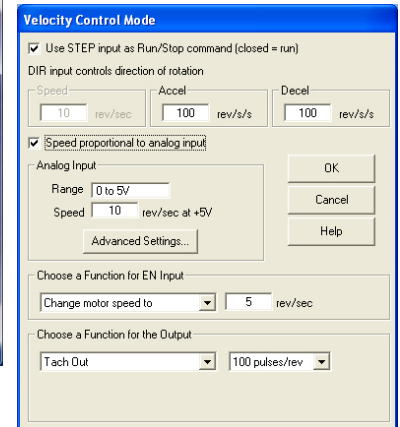
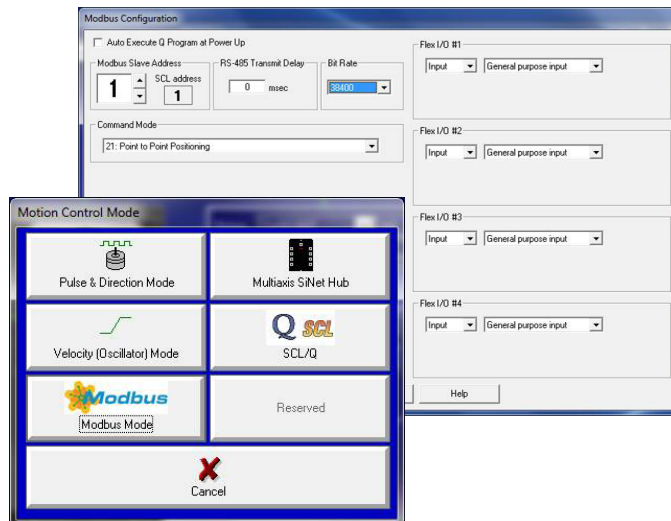
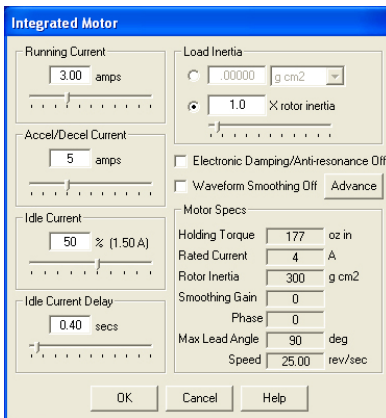
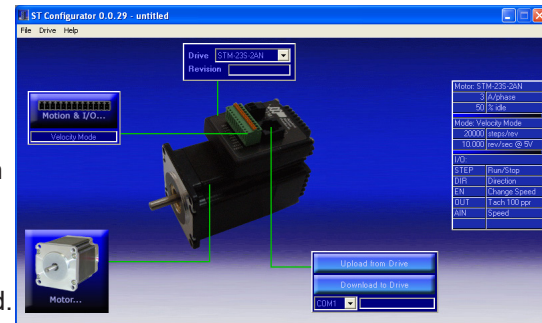
Step 2

- a) Download and install the *ST Configurator*™ software.
- b) Launch the software by clicking:
Start / Programs / Applied Motion Products / *ST Configurator*
- c) Select the correct COM port using the drop down list
- d) Connect the drive to your PC using the RS-232 programming cable or RS-422/485 adaptor



Step 3

- Apply power to the drive. The drive model and firmware revision should be automatically displayed. If they are not, check the com port setting.
- Follow the configuration instructions in the *ST Configurator™* help screens. The *ST Configurator™* software can be used to set up your drive to operate in several different modes including: Pulse & Direction, Analog Velocity, and SCL.
- ST Configurator™* includes a self test option (under the Drive menu) to verify that the STM and power supply are correctly wired and configured.



Recommended RS-485 Adapter

USB-COMi-M (P/N 8500-003)

- Available from Applied Motion Products
- Converts RS-422 and RS-485 to USB

For four wire RS-485, set SW2 to OFF and SW1,3,4 to ON. On the USB-COMi-M screw terminal connector:

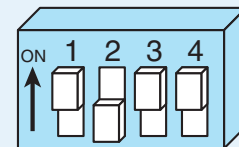
- Connect pin 1 to RX-
- Connect pin 2 to RX+
- Connect pin 3 to TX+
- Connect pin 4 to TX-
- Connect pin 6 to GND
- The DB-9 connector is not used.

Remove the two screws on the sides of the unit, then remove the outer cover.

- For RS-485 operation, ensure that the row of colored pin jumpers are installed.
- Note, all internal jumpers must be installed.



**4 Wire
RS-485**



If you have any questions or comments, please call Applied Motion Products Customer Support: (800) 525-1609, or visit us online at applied-motion.com.

STM23/24 Quick Setup Guide

920-0020 F



18645 Madrone Pkwy
Morgan Hill, CA 95037
Tel: 800-525-1609
applied-motion.com